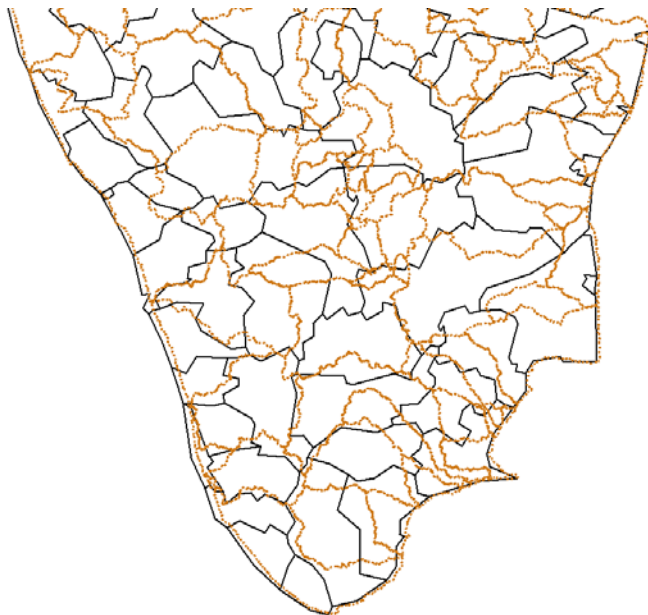


**Figure 5: Administrative and Hydrological Regions – Southern Africa**



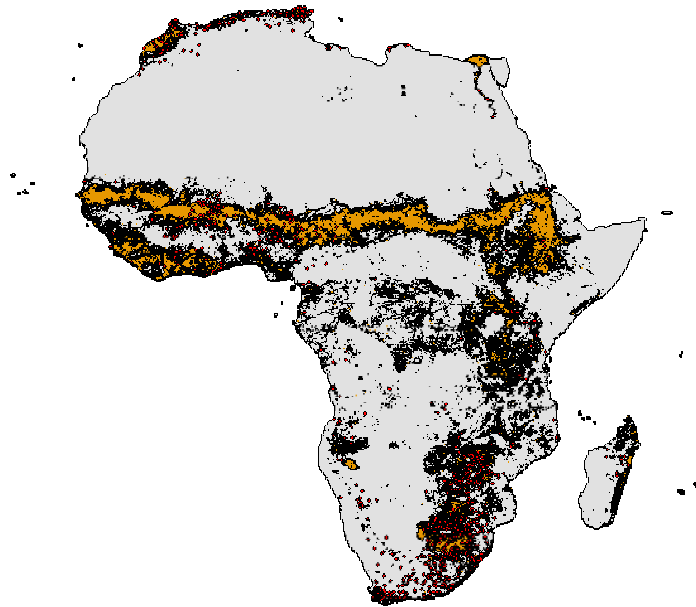
Notes: (1) Green lines constitute administrative areas; (2) Black lines constitute hydrological regions.

**Figure 6: Administrative and Hydrological Regions – Southern India**

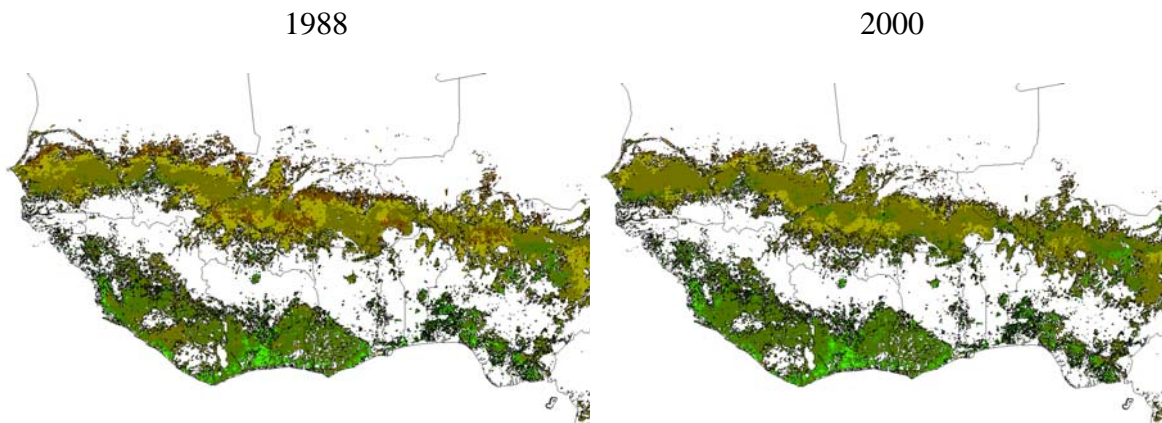


Notes: (1) Black lines constitute districts; (2) Brown lines constitute hydrological regions.

**Figure 7: Cropland and Dams**

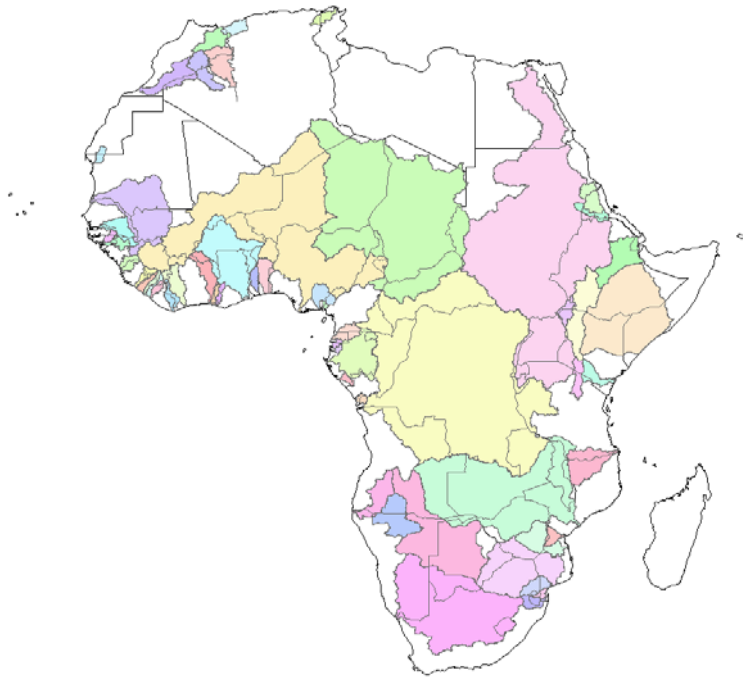


**Figure 8: NPP of the Western African Agricultural Belt – 1988 and 2000**

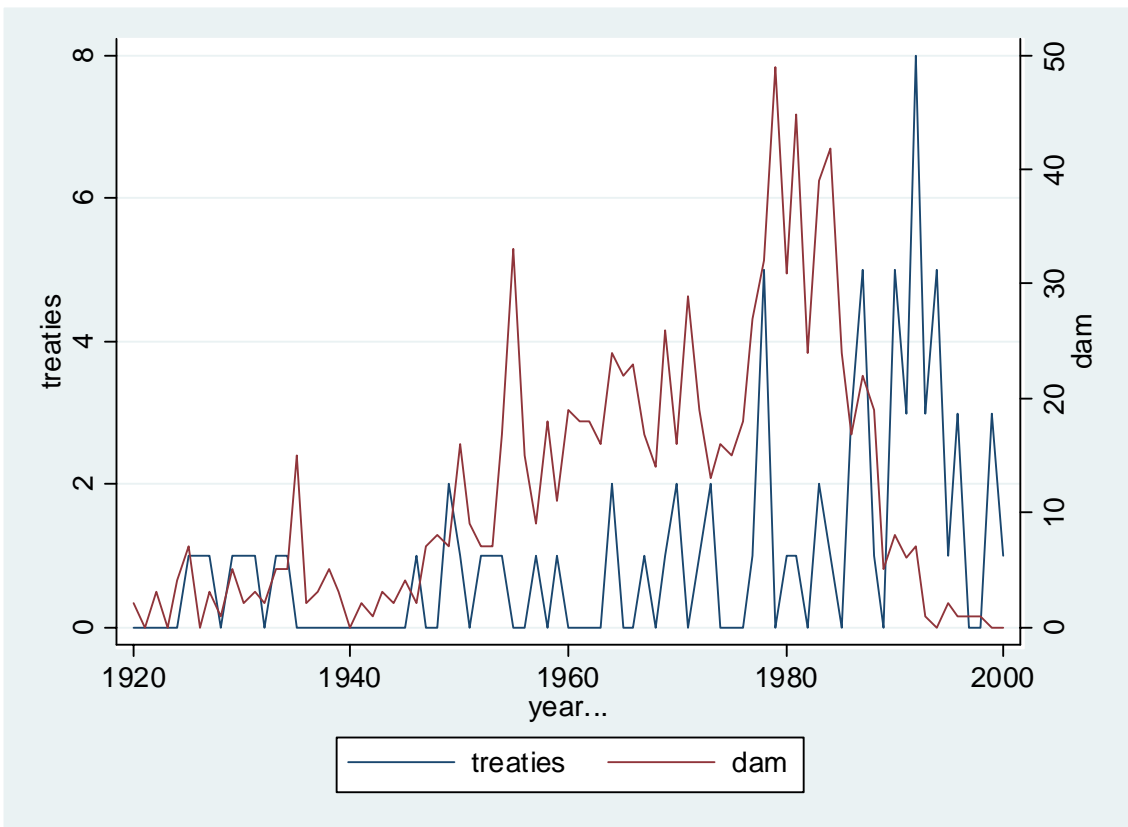


Notes: Darker green shading indicates higher values of NPP.

**Figure 9: Treaties' River Basins**



**Figure 10: Trends in Treaties and Dam Construction – 1900-2000**



## REFERENCES

- Bakker, M. (2006). Transboundary River Floods: Vulnerability of Continents, International River Basins and Countries, PhD Thesis, Oregon University.
- Barbier, E. (2002). "Upstream Dams and Downstream Water Allocation: The Case of the Hadejia' Jama'are Floodplain, Northern Nigeria", mimeo.
- Barrios, S., Outtara, O., Strobl, E. (2008). "The Impact of Climate Change on Agricultural Production in Sub-Saharan Africa", *Food Policy*, 33, pp. 287-298.
- Barrios, S., Bertinelli, L., and Strobl, E. (2009). "Trends in Rainfall and Economic Growth in Africa: A Neglected Cause of the Growth Tragedy", *Review of Economics and Statistics*, forthcoming.
- Dinar, S. (2008). *International Water Treaties*, Routledge Studies in the Modern World Economy, Routledge.
- Driscoll, J. and Kraay, A. (1998). Consistent Covariance Matrix Estimation with Spatially Dependent Panel Data, *Review of Economics and Statistics*, 80, pp. 549-560.
- Duflo, E. and Pande, R. (2007). "Dams", *Quarterly Journal of Economics*, 122, pp. 601-646.
- Goetz, S. and Prince, S. (1999). "Modelling Terrestrial Carbon Exchange and Storage: Evidence and Implications of Functional Convergence in Light-Use Efficiency", *Advances in Ecological Research*, 28, pp. 57-92.
- Hathaway, T. and Pottinger, L. (2008). "The Great Hydro-Rush: The Privatisation of Africa's Rivers", in Electric Capitalism: Recolonising Africa on the Power Grid, McDonald, D. (ed), HSRC Press.
- Heinsch, F., Reeves, M., Votava, P., Kang, S., Milesi, C., Zhao, M., Glassy, J., Jolly, W., Loehman, R., Bowker, C., Kimball, J., Nemani, R., and Running, S. (2003). User's Guide. GPP and NPP (MOD17A2/A3) Products. NASA MODIS Land Algorithm: <http://www.ntsg.umt.edu/modis/MOD17UsersGuide.pdf>
- Heinsch, F. A.; Jolly, W. M.; Mu, Q.; Kimball, J. S. (2005). "Regional Scaling of Cropland Net Primary Production for Nebraska using Satellite Remote Sensing from MODIS and the Ecosystem Process Model BIOME-BGC", *American Geophysical Union*, Spring Meeting 2005.
- Hicke J. A., Asner G. P., Randerson J. T., Tucker C. J., Los S. O., Birdsey R., Jenkins J. C., Field C., Holland E. (2000a). "Satellite-derived increases in net primary productivity across North America, 1982-1998", *Geophysical Research Letters*, 29(10):10. 1029 2001GL013578, 2002.

- Hicke J. A., Asner G. P., Randerson J. T., Tucker C. J., Los S. O., Birdsey R., Jenkins J. C., Field C. (2002b) "Trends in North American net primary productivity derived from satellite observations, 1982-1998", *Global Biogeochemical Cycles*, 16(2):10. 1029/2001GB001550, 2002.
- Hicke, J., Lobell, D., and Asner, G. (2004). "Cropland Area and Net Primary Production Computed from 30 years of USDA Agricultural Harvest Data", *Earth Interactions*, 8, pp. 1-20.
- Lautze, J. and Giordano, M. (2005). "Transboundary Water Law in Africa: Development, Nature, and Geography", *Natural Resources Journal*, 45, pp. 1053-1088.
- Lobell, D., Hicke, J., Anser, G., Field, C., Tucker, C., and Los, S. (2002). "Satellite Estimates of Productivity and Light Use Efficiency in United States Agriculture, 1982-1998", *Global Change Biology*, 8, pp. 1-15.
- Marchand, M. (1987). "The Productivity of African Floodplains", *International Journal of Environmental Studies*, 29, pp. 201-211.
- McKee, T, Doesken, N., and Kleist, J. (1993). "The relationship of drought frequency and duration to time scales". Preprints, *8th Conference on Applied Climatology*, pp. 179-184. January 17-22, Anaheim, California.
- Monfreda, C., Ramankutty, N., and Foley, J. (2008). "Farming the planet: 2. Geographic distribution of crop areas, yields, physiological types, and net primary production in the year 2000", *Global Biogeochemical Cycles*, 22GB1003, doi:10.1029/2007GB002952.
- Prince, S., and Goward, S. (1995). "Global Primary Production: A Remote Sensing Approach", *Journal of Biogeography*, 22, pp. 815-835.
- Thompson, J., and Polet, G. (2000). "Hydrology and Land Use in a Sahelian Floodplain Wetland", *Wetlands*, 20, pp. 639-659.
- United Nations Economic Commission for Africa (UNECA), (2000). Transboundary River/Lake Basin Water Development in Africa: Prospects, Problems, and Achievements.
- Veron, S., Paruelo, J., Sala, O., and Lauenroth, W. (2002). "Environmental Controls fo Primary Production in Agricultural Systems of the Argentine Pampas", *Ecosystems*, 5, pp. 625-635.
- World Bank (1995). Water Resources Management. Washington, D.C.: International Bank for Reconstruction and Development.
- World Commission of Dams (WCD), (2000). Dams and Development: A New Framework for Decisionmaking, Earthscan Publication Ltd.